

Shielded SMD Power Inductors - SDT3316 SERIES

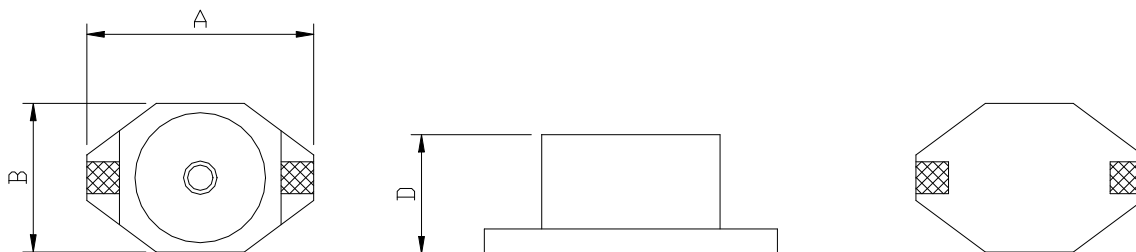


PART NUMBERING SYSTEM

SDT	3316	—	101M	—	LF
TYPE	DIMENSIONS		INDUCTANCE		LEAD FREE

SHAPES AND DIMENSIONS

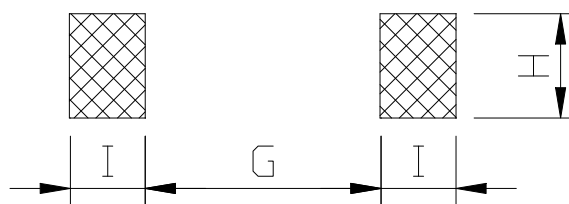
UNIT : mm



A=12.95 max. B=9.40 max. D=5.08 max.

RECOMMENDED PATTERNS

UNIT : mm



G= 7.37 H= 2.79 I = 2.92

FEATURES

- Small high current inductor - **only 0.51" x 0.37" x 0.508" high**
- **True surface mount design**, magnetically shielded, fully pick and place compatible
- Specially designed to have a "**swinging**" inductance vs current characteristic
- Specially designed to provide **low loss** benefit of ferrite and **soft saturation**
- **RoHS-compliant**. 260°C compatible

Shielded SMD Power Inductors - SDT3316 SERIES



SPECIFICATION TABLE

PART NUMBER	INDUCTANCE (μ H)	INDUCTANCE Rating (μ H)	DCR (Ω) (Max.)	Isat(A) (Max.)	SRF(MHz) (Min.)	Switching Freq. Max. (Freq.)
SDT3316-1R0M-LF	1.0 \pm 20%	0.5	0.025	5.0	60	1MHz
SDT3316-1R5M-LF	1.5 \pm 20%	0.7	0.030	5.0	55	1MHz
SDT3316-2R2M-LF	2.2 \pm 20%	1.0	0.035	5.0	55	1MHz
SDT3316-3R3M-LF	3.3 \pm 20%	1.5	0.040	5.0	50	1MHz
SDT3316-4R7M-LF	4.7 \pm 20%	2.0	0.045	3.0	45	1MHz
SDT3316-6R8M-LF	6.8 \pm 20%	4.0	0.050	2.5	40	1MHz
SDT3316-100M-LF	10 \pm 20%	5.0	0.055	2.0	35	1MHz
SDT3316-150M-LF	15 \pm 20%	6.0	0.060	1.8	25	1MHz
SDT3316-220M-LF	22 \pm 20%	10	0.084	1.5	22	1MHz
SDT3316-330M-LF	33 \pm 20%	12	0.090	1.3	18	1MHz
SDT3316-470M-LF	47 \pm 20%	27	0.110	1.0	16	1MHz
SDT3316-680M-LF	68 \pm 20%	40	0.150	0.90	12	1MHz
SDT3316-101M-LF	100 \pm 20%	50	0.290	0.80	9.0	1MHz
SDT3316-151M-LF	150 \pm 20%	80	0.360	0.60	8.0	100KHz
SDT3316-221M-LF	220 \pm 20%	90	0.390	0.50	6.0	100KHz
SDT3316-331M-LF	330 \pm 20%	150	0.730	0.40	5.0	100KHz
SDT3316-471M-LF	470 \pm 20%	200	0.880	0.35	4.0	100KHz
SDT3316-681M-LF	680 \pm 20%	300	1.150	0.30	3.0	100KHz
SDT3316-102M-LF	1000 \pm 20%	420	1.450	0.25	2.5	100KHz

- Inductance tested at 100 KHz, 0.1 Vrms.
- Isat: DC current at which the inductance drops 20% typ. from its value without current.
- **SDT Series inductors are designed for current spikes as high as twice the current rating.**
- Operating temperature range -40°C to +125°C.
- Electrical specifications at 25°C.
- Packing : 13" reel, machine-ready ,embossed plastic tape (1,000 parts per full reel).